

CDBG APPLICATION PART 1 - CHECKLIST

Place this checklist on top of the application. Submit the following pages in the order outlined below plus required attachments.

PART 2 - COMPLETE ONCE PER APPLICATION

- ☐ A - Applicant Contact Information
- ☐ B - Proposed Projects
- ☐ C- Affidavit of Compliance with Federal, State, Local Regulations
- ☐ D - Conflict of Interest Certification

PART 3 - COMPLETE PER PROJECT

- ☐ A- Project Type

PART 4 - COMPLETE PER PROJECT

- ☐ A - CDBG National Objective
- ☐ B - Project Description
- ☐ C - Code Enforcement
- ☐ D - Project Location
- ☐ E - Project Purpose
- ☐ F - Project Duration
- ☐ G - Project Administration
- ☐ H - Additional Resources
- ☐ I - Environmental Review Record

PART 5 - COMPLETE ONCE PER APPLICATION

- ☐ A - Public Hearing Notice
- ☐ Option #1 Affidavit of Publication
- ☒ Option #2 Web Posting and Certification

- ☐ B - Public Hearing Minutes
- ☒ Option #1 True Copy
- ☐ Option #2 Governing Body Resolution

CDBG APPLICATION PART 2 - APPLICANT INFORMATION

A - APPLICANT CONTACT

Community:	
CDBG Planning Allocation:	
Contact Person:	
Telephone:	
Best time to contact:	
UEI #:	
Copy of current SAMS attached:	Yes _____ If No, Explain: _____
Is community subject to Single Audit?	Yes _____ No _____

B - PROPOSED PROJECT(S)

Project # _____ Name: _____ Allocation: _____	
Project # _____ Name: _____ Allocation: _____	
Project # _____ Name: _____ Allocation: _____	
Project # _____ Name: _____ Allocation: _____	
Total # of Projects:	
# of Public Service Projects:	
Public Service %:	

C - AFFIDAVIT OF COMPLIANCE

The undersigned certifies that the information in this application is true and correct. In applying for CDBG funds, the applicant has read, understands and agrees to comply with all the provisions of all federal regulations issued thereto by the U.S. Department of Housing and Urban Development (HUD), state and local regulations and laws.

Name of Highest Elected Official or Designee:

Title of Highest Elected or Designee:

Signature:

CDBG APPLICATION PART 2 - CONTINUED

D - CONFLICT OF INTEREST CERTIFICATION

Code of Federal Regulations Title 24, Volume 3 Revised as of April 1, 2004 CITE: 24CFR570.611

TITLE 24--HOUSING AND URBAN DEVELOPMENT CHAPTER V--OFFICE OF ASSISTANT SECRETARY FOR COMMUNITY PLANNING AND DEVELOPMENT, DEPARTMENT OF HUD

Part 570 Community Development Block Grants

Subpart K Other Program Requirements

Sec. 570.611 Conflict of interest

(a) Applicability. (1) In the procurement of supplies, equipment, construction, and services by recipients and by subrecipients, the conflict of interest provisions in 24 CFR 85.36 and 24 CFR 84.42, respectively, shall apply. (2) In all cases not governed by 24 CFR 85.36 and 84.42, the provisions of this section shall apply. Such cases include the acquisition and disposition of real property and the provision of assistance by the recipient or by its subrecipients to individuals, businesses, and other private entities under eligible activities that authorize such assistance (e.g., rehabilitation, preservation, and other improvements of private properties or facilities pursuant to Sec. 570.202; or grants, loans, and other assistance to businesses, individuals, and other private entities pursuant to Sec. 570.203, 570.204, 570.455, or 570.703(i)).

(b) Conflicts prohibited. The general rule is that no persons described in paragraph (c) of this section who exercise or have exercised any functions or responsibilities with respect to CDBG activities assisted under this part, or who are in a position to participate in a decision making process or gain inside information with regard to such activities, may obtain a financial interest or benefit from a CDBG-assisted activity, or have a financial interest in any contract, subcontract, or agreement with respect to a CDBG-assisted activity, or with respect to the proceeds of the CDBG-assisted activity, either for themselves or those with whom they have business or immediate family ties, during their tenure or for one year thereafter.

(c) Persons covered. The conflict of interest provisions of paragraph (b) of this section apply to any person who is an employee, agent, consultant, officer, or elected official or appointed official of the recipient, or of any designated public agencies, or of subrecipients that are receiving funds under this part.

(d) Exceptions. Upon the written request of the recipient, HUD may grant an exception to the provisions of paragraph (b) of this section on a case-by-case basis when it has satisfactorily met the threshold requirements of (d)(1) of this section, taking into account the cumulative effects of paragraph (d)(2) of this section.

(1) Threshold requirements. HUD will consider an exception only after the recipient has provided the following documentation: (i) A disclosure of the nature of the conflict, accompanied by an assurance that there has been public disclosure of the conflict and a description of how the public disclosure was made; and (ii) An opinion of the recipient's attorney that the interest for which the exception is sought would not violate State or local law.

(2) Factors to be considered for exceptions. In determining whether to grant a requested exception after the recipient has satisfactorily met the requirements of paragraph (d)(1) of this section, HUD shall conclude that such an exception will serve to further the purposes of the Act and the effective and efficient administration of the recipient's program or project, taking into account the cumulative effect of the following factors, as applicable: (i) Whether the exception would provide a significant cost benefit or an essential degree of expertise to the program or project that would otherwise not be available; (ii) Whether an opportunity was provided for open competitive bidding or negotiation; (iii) Whether the person affected is a member of a group or class of low-income persons intended to be the beneficiaries of the assisted activity, and the exception will permit such person to receive generally the same interests or benefits as are being made available or provided to the group or class; (iv) Whether the affected person has withdrawn from his or her functions or responsibilities, or the decision making process with respect to the specific assisted activity in question; (v) Whether the interest or benefit was present before the affected person was in a position as described in paragraph (b) of this section; (vi) Whether undue hardship will result either to the recipient or the person affected when weighed against the public interest served by avoiding the prohibited conflict; and (vii) Any other relevant considerations. By applying for CDBG funds, the Participating Community certifies that they have read the above:

Community Name:	
Name of Highest Elected Official or Designee:	
Title of Highest Elected or Designee:	
Signature:	

CDBG APPLICATION - PART 3 PROJECT TYPE

(Please ✓ one box per project)

Project # _____ Allocation: \$ _____

PROJECT TYPE						
Account	Account #	Objective	Goal	Indicator	Outcome	
ACQUISITION AND DISPOSITION						
✓ Acquisition of Real Property	172170-730003	Suitable Living Environment	Strengthen Communities	# of LMI HH with new/improved access	Sustainability	
Disposition of Real Property	172170-730536	Suitable Living Environment	Strengthen Communities	# of LMI HH with new/improved access	Sustainability	
Clearance and Demolition	172170-730345	Suitable Living Environment	Strengthen Communities	Slum Blight	Sustainability	
Cleanup of Contaminated Sites		Suitable Living Environment	Strengthen Communities	# of LMI HH with new/improved access	Sustainability	
Relocation		Suitable Living Environment	Strengthen Communities	# of LMI HH with new/improved access	Sustainability	
PUBLIC FACILITIES AND IMPROVEMENTS						
✓ Senior Center	172170-731696	Suitable Living Environment	Strengthen Communities	# of LMI HH with new/improved access	Sustainability	
Facilities for Persons with Disabilities		Suitable Living Environment	Strengthen Communities	# of LMI HH with new/improved access	Sustainability	
Homeless Facilities (not operating costs)		Suitable Living Environment	Strengthen Communities	# of LMI HH with new/improved access	Sustainability	
Youth Centers		Suitable Living Environment	Strengthen Communities	# of LMI HH with new/improved access	Sustainability	
Neighborhood Facilities		Suitable Living Environment	Strengthen Communities	# of LMI HH with new/improved access	Sustainability	
Parks, Recreational Facilities	172170-731332	Suitable Living Environment	Strengthen Communities	# of LMI HH with new/improved access	Sustainability	
Parking Facilities		Suitable Living Environment	Strengthen Communities	# of LMI HH with new/improved access	Sustainability	
Solid Waste Disposal Improvements	172170-730744	Suitable Living Environment	Strengthen Communities	# of LMI HH with new/improved access	Sustainability	
Flood Drainage Improvements	172170-730744	Suitable Living Environment	Strengthen Communities	# of LMI HH with new/improved access	Sustainability	
Water/Sewer Improvements	172170-732114	Suitable Living Environment	Strengthen Communities	# of LMI HH with new/improved access	Sustainability	
Street Improvements	172170-731864	Suitable Living Environment	Strengthen Communities	# of LMI HH with new/improved access	Sustainability	
Sidewalks	172170-731745	Suitable Living Environment	Strengthen Communities	# of LMI HH with new/improved access	Sustainability	
Child Care Centers		Suitable Living Environment	Strengthen Communities	# of LMI HH with new/improved access	Sustainability	
Tree Planting	172170-732021	Suitable Living Environment	Strengthen Communities	# of LMI HH with new/improved access	Sustainability	
Fire Stations/Equipment	172170-730733	Suitable Living Environment	Strengthen Communities	# of LMI HH with new/improved access	Sustainability	
Health Facilities		Suitable Living Environment	Strengthen Communities	# of LMI HH with new/improved access	Sustainability	
Facilities for Abused and Neglected Children		Suitable Living Environment	Strengthen Communities	# of LMI HH with new/improved access	Sustainability	
Asbestos Removal		Suitable Living Environment	Strengthen Communities	# of LMI HH with new/improved access	Sustainability	
Facilities for AIDS Patients (not operating costs)		Suitable Living Environment	Strengthen Communities	# of LMI HH with new/improved access	Sustainability	
Other Public Improvements Not Listed in 03A-03T	172170-731498	Suitable Living Environment	Strengthen Communities	# of LMI HH with new/improved access	Sustainability	
Remove Architectural Barriers	172170-731619					
Special Assessments	172170-731815					

CDBG APPLICATION - PART 3 PROJECT TYPE CONTINUED

(Please ✓ one box per project)

Project # _____ Allocation: \$ _____

PROJECT TYPE CONTINUED					
Account	Account #	Objective	Goal	Indicator	Outcome
PUBLIC FACILITIES AND IMPROVEMENTS CONTINUED					
✓ <input type="checkbox"/> Interim Assistance		Suitable Living Environment	Strengthen Communities	# of LMI HH with new/improved access	Sustainability
<input type="checkbox"/> Privately Owned Utilities		Suitable Living Environment	Strengthen Communities	# of LMI HH with new/improved access	Sustainability
<input type="checkbox"/> Non-Residential Historic Preservation	172170-731280	Suitable Living Environment	Strengthen Communities	Slum Blight	Sustainability
<input type="checkbox"/> Tornado Shelters Serving Private Mobile Home Parks		Suitable Living Environment	Strengthen Communities	# of LMI HH with new/improved access	Sustainability
PUBLIC SERVICES					
<input type="checkbox"/> Homeless/AIDS Patients Programs		Suitable Living Environment	Improve Quality of Life	# of LMI persons with new access	Availability/Accessibility
<input type="checkbox"/> Senior Services	172160-731712				
<input type="checkbox"/> Services for Persons with Disabilities	172160-730535	Suitable Living Environment	Improve Quality of Life	# of LMI persons with new access	Availability/Accessibility
<input type="checkbox"/> Legal Services	172160-731073	Suitable Living Environment	Improve Quality of Life	# of LMI persons with new access	Availability/Accessibility
<input type="checkbox"/> Youth Services	172160-732185	Suitable Living Environment	Improve Quality of Life	# of LMI persons with new access	Availability/Accessibility
<input type="checkbox"/> Transportation Services	172160-732011	Suitable Living Environment	Improve Quality of Life	# of LMI persons with new access	Availability/Accessibility
<input type="checkbox"/> Substance Abuse Services		Suitable Living Environment	Improve Quality of Life	# of LMI persons with new access	Availability/Accessibility
<input type="checkbox"/> Services for victims of domestic violence/ dating violence/sexual assault/stalking	172160-730137	Suitable Living Environment	Improve Quality of Life	# of LMI persons with new access	Availability/Accessibility
<input type="checkbox"/> Employment Training	172160-731941	Suitable Living Environment	Improve Quality of Life	# of LMI persons with new access	Availability/Accessibility
<input type="checkbox"/> Crime Awareness/Prevention		Suitable Living Environment	Improve Quality of Life	# of LMI persons with new access	Availability/Accessibility
<input type="checkbox"/> Fair Housing Activities (subject to PS cap)	132210-702010	Suitable Living Environment	Improve Quality of Life	# of LMI persons with new access	Availability/Accessibility
<input type="checkbox"/> Tenant/Landlord Counseling		Suitable Living Environment	Improve Quality of Life	# of LMI persons with new access	Availability/Accessibility
<input type="checkbox"/> Child Care Services		Suitable Living Environment	Improve Quality of Life	# of LMI persons with new access	Availability/Accessibility
<input type="checkbox"/> Health Services		Suitable Living Environment	Improve Quality of Life	# of LMI persons with new access	Availability/Accessibility
<input type="checkbox"/> Services for Abused and Neglected Children		Suitable Living Environment	Improve Quality of Life	# of LMI persons with new access	Availability/Accessibility
<input type="checkbox"/> Mental Health Services		Suitable Living Environment	Improve Quality of Life	# of LMI persons with new access	Availability/Accessibility
<input type="checkbox"/> Screening for Lead Poisoning		Suitable Living Environment	Improve Quality of Life	# of LMI persons with new access	Availability/Accessibility
<input type="checkbox"/> Subsistence Payments	172160-730571	Suitable Living Environment	Improve Quality of Life	# of LMI persons with new access	Availability/Accessibility
<input type="checkbox"/> Homebuyer Downpayment Assistance - Excluding Housing Counseling under 24 CFR 5.100		Suitable Living Environment	Improve Quality of Life	# of LMI persons with new access	Availability/Accessibility
<input type="checkbox"/> Rental Housing Subsidies		Suitable Living Environment	Improve Quality of Life	# of LMI persons with new access	Availability/Accessibility
<input type="checkbox"/> Security Deposits		Suitable Living Environment	Improve Quality of Life	# of LMI persons with new access	Availability/Accessibility

CDBG APPLICATION - PART 3 PROJECT TYPE CONTINUED

(Please ✓ one box per project)

Project # _____ Allocation: \$ _____

PROJECT TYPE CONTINUED						
Account	Account #	Objective	Goal	Indicator	Outcome	
✓	PUBLIC SERVICES CONTINUED					
	Housing Counseling only, under 24 CFR 5.100	132210-702010	Suitable Living Environment	Improve Quality of Life	# of LMI persons with new access	Availability/Accessibility
	Neighborhood Cleanups		Suitable Living Environment	Improve Quality of Life	# of LMI persons with new access	Availability/Accessibility
	Food Banks		Suitable Living Environment	Improve Quality of Life	# of LMI persons with new access	Availability/Accessibility
	Housing Information and Referral Services		Suitable Living Environment	Improve Quality of Life	# of LMI persons with new access	Availability/Accessibility
	Housing Counseling Supporting Homebuyer Downpayment Assist (05R)		Suitable Living Environment	Improve Quality of Life	# of LMI persons with new access	Availability/Accessibility
	Other Public Services Not Listed in 03T and 05A-05Y (Housekeeping/Safety & Repair/Yard)	172160-730880 172160-731665 172160-732170	Suitable Living Environment	Improve Quality of Life	# of LMI persons with new access	Availability/Accessibility
✓	HOUSING					
	Loss of Rental Income		Decent Affordable Housing			Affordability
	Construction of Housing		Decent Affordable Housing			Affordability
	Housing Counseling for Homeownership Assist (13B)		Decent Affordable Housing			Affordability
	Homeownership Assistance – ex Housing Counseling		Decent Affordable Housing			Affordability
	Rehabilitation: Single-Unit Residential	132290-730898	Decent Affordable Housing	# of units brought to code		Affordability
	Emergency Rehab	172170-730569	Decent Affordable Housing	# of units brought to code		Affordability
	Minor Home Repair	172170-731227	Decent Affordable Housing	# of units brought to code		Affordability
	Mobile Home Repair		Decent Affordable Housing	# of units brought to code		Affordability
	Rehabilitation: Multi-Unit Residential		Decent Affordable Housing	# of units brought to code		Affordability
	Rehabilitation: Public Housing Modernization		Decent Affordable Housing	# of units brought to code		Affordability
	Rehabilitation: Other Publicly Owned Res Buildings	172160-731602	Decent Affordable Housing	# of units brought to code		Affordability
	Rehabilitation: Energy Efficiency Improvements		Decent Affordable Housing	# of units brought to code		Affordability
	Rehabilitation: Acquisition		Decent Affordable Housing	# of units brought to code		Affordability
	Rehabilitation: Administration	132280-731605	N/A	N/A	N/A	N/A
	Lead-Based Paint/Lead Hazards Testing/Abatement		Decent Affordable Housing			Affordability
	Housing Services, Excluding Housing Counseling		Decent Affordable Housing			Affordability
	Housing Counseling Support HOME Hsg Activities		Decent Affordable Housing			Affordability
	Housing Counseling in Conjunction with CDBG Assisted Housing Rehab		Decent Affordable Housing			Affordability
	Code Enforcement (See Part 4 C)	172170-730310	Suitable Living Environment	Strengthen Communities	# of LMI persons served	Sustainability

CDBG APPLICATION - PART 3 PROJECT TYPE CONTINUED

(Please ☒ one box per project)

Project # _____ Allocation: \$ _____

PROJECT TYPE CONTINUED					
Account	Account #	Objective	Goal	Indicator	Outcome
<input checked="" type="checkbox"/> HOUSING CONTINUED					
Residential Historic Preservation		Decent Affordable Housing			Affordability
Operation and Repair of Foreclosed Property ("In-Rem Housing")		Decent Affordable Housing			Affordability
<input checked="" type="checkbox"/> ECONOMIC DEVELOPMENT					
Rehabilitation: Publicly or Privately Owned Commercial/Industrial					
Commercial/Industrial: Acquisition/Disposition					
Commercial/Industrial: Infrastructure Development					
Commercial/Industrial: Building Acquisition, Construction, Rehabilitation					
Commercial/Industrial: Other Improvements					
Economic Development: Direct Financial Assistance to For-Profit Business					
Economic Development: Technical Assistance					
Economic Development: Microenterprise Assistance					
<input checked="" type="checkbox"/> GENERAL ADMINISTRATION					
General Program Administration					
Fair Housing Activities (subject to Admin cap)					
CDBG Funding of HOME Admin					
CDBG Funding of HOME CHDO Operating Expenses					
<input checked="" type="checkbox"/> OTHER					
CDBG Non-Profit Capacity Building					

CDBG APPLICATION - PART 4

Project # _____ Allocation: \$ _____

A - CDBG NATIONAL OBJECTIVE		
Which one of the National Objectives will this project target?		
✓	Code/Description	24 CFR
Benefits low and moderate income persons		
For the National Objective that principally benefits low- and moderate-income persons is selected, describe how the activity will address ONE of the subcategories listed below:		
	1) Area Benefit Activity - Those projects carried out in a neighborhood consisting predominantly of LMI persons and providing services for such persons yet could be available to other non-income eligible persons in the area. This information can be documented by documenting that the area is primarily residential (e.g., zoning map); and that the income characteristics of households in the service area (i.e., Census data)	570.208(a))
	2) Limited Clientele Activity - Those that benefit a specific group of people (rather than all the residents in a particular area) who are, or presumed to be, income eligible. In order to meet the LMI Limited Clientele criteria, the activity must: serve at least 51% LMI, as evidenced by documentation and data concerning beneficiary family size and income; have income eligibility requirements which limit the service to persons meeting the LMI income requirements, as evidenced by procedures, intake/application forms, income limits and other sources of documentation; serve a specific group presumed by HUD to be income-eligible include: abused children, battered persons, elderly persons, handicapped adults, homeless persons, illiterate persons, migrant farm workers and persons living with AIDS; and be of such a nature and in a location that it may be concluded that the activity's clientele are LMI.	
	3) Income Eligible Housing Activity - These projects add or improve a permanent residential structure wherein, upon completion, income eligible persons will occupy 51% or more of the housing units.	
	4) Job Creation or Retention Activity - A project which creates or retains permanent jobs, of which at least 51% are either taken by or available to income eligible persons.	
JUSTIFICATION:		
Aids in the prevention or elimination of slums or blight		
For the National Objective that principally aids in the prevention of elimination of slums or blight is selected, describe how the activity will address ONE of the subcategories listed below:		
	1) At least 25% of the properties throughout the area exhibit the following: a. Physical deterioration of buildings/improvements; b. Abandonment of properties; c. Chronic high occupancy turnover rates or chronic high vacancy rates in commercial or industrial buildings; d. Significant declines in property values or abnormally low property values relative to other areas in the community; or e. Known or suspected environmental contamination	570.208(b))
	2) Public improvements throughout the area are in a general state of deterioration.	
	Documentation must be maintained by the grantee on the boundaries of the area and the conditions that qualified the area at the time of its designation. The designation of an area as slum or blighted must be re-determined every 10 years for continued qualifications.	
JUSTIFICATION:		

CDBG APPLICATION - PART 4 CONTINUED

Project # _____ Allocation: \$ _____

B - PROJECT DESCRIPTION

Provide a detailed description of the proposed activity including how the activity will address the needs of the community:

Identify who will benefit from the proposed activity (ex: homeless, abused children, seniors, etc). If your program was designed to benefit persons on L/M income, describe the process you will use to identify these persons (process for income verification if persons are not members of HUD's presumed L/M clientele):

CDBG APPLICATION - PART 4 CONTINUED

Project # _____ Allocation: \$ _____

C - CODE ENFORCEMENT PROJECT ONLY

Will any of the supportive activities offered in conjunction with the Code Enforcement Program possibly trigger displacement of any "persons"?	<input type="checkbox"/>	Yes
	<input type="checkbox"/>	No

If "Yes" Explain:

The grantee will be required as a special condition of the CDBG grant contract to submit a formal relocation or displacement plan for the program prior to release of grant funds.

If "No" Explain how that determination was made?

Service Area Where the Code Enforcement Program Will Be Carried Out: Provide a brief narrative of the proposed activity and service area where the Code Enforcement activity will be carried out.

Severity of Problem

What level of service is needed?

<input type="checkbox"/>	A new code enforcement program
<input type="checkbox"/>	An existing code enforcement program to be increased currently funded by:
<input type="checkbox"/>	An existing code enforcement program previously funded with CDBG funds

How was need determined?

Service Area Identified

Census Tract/Block Groups

Census Tract	Census Tract	Census Tract	Census Tract	Census Tract
Block Group (s)	Block Group (s)	Block Group (s)	Block Group (s)	Block Group (s)

Specific streets within a service area

<input type="checkbox"/>	Maps attached showing the area is primarily residential
--------------------------	---

Beneficiaries (People)

Specify the type of beneficiaries who will benefit from this program. Supporting documentation is required.

<input type="checkbox"/>	Primarily Low/Mod (Include % of total population that is Low/Mod)
--------------------------	---

Jurisdiction's definition of *deteriorated or deteriorating* (HCDA, Section 105(a)(3)) Define:

CDBG APPLICATION - PART 4 CONTINUED

Project # _____ Allocation: \$ _____

Conditions within the Service Area

Describe, in enough detail, the existing conditions in the service area that qualifies the area, as defined above by the jurisdiction, as deteriorating or deteriorated.

☐ Photos attached with any applicable reports or information

Identify problems resulting if the code enforcement program is not provided, continued or expanded:

Extent of the Solution

Explain how and to what extent the proposed activity will solve the problem:

Provide a summary of the proposed strategy for using code enforcement together with public or private improvements or services (e.g., a homeowner rehabilitation program) that can be expected to arrest the decline of the service area.

Describe the methodology and metrics to be used to assess whether the code enforcement program and other activities will mitigate the deterioration of the service area during the time CDBG funds are expended to implement the code enforcement program.

Activity Implementation Plan

Provide a detailed plan of how the code enforcement program, together with “supportive activities” (i.e. public or private improvements, rehabilitation, or services) will mitigate deterioration and is expected to arrest the decline of the area. Also, identify any current or potential funding sources available to assist with proposed supportive activities.

CDBG APPLICATION - PART 4 CONTINUED

Project # _____ Allocation: \$ _____

D - PROJECT LOCATION		
Please <input checked="" type="checkbox"/> one box	<input checked="" type="checkbox"/>	
Describe Project Location		City/Township/Village Wide
		Area Wide Benefit Only
		Specific
Parcel ID#		
Address		
City		
Zip Code		
Areawide Benefit (AWB) Projects Only	List Census Tract	
	List Block Group	
Attach AWB Map with project location indicated		
Describe service area for:		
Fire Stations/ Equipment		
Parks, Recreational Facilities		
Special Assessments		

E - PROJECT PURPOSE			
ALL PROJECTS Enter number of units in the appropriate type. Enter 0 for other unit types			
# of clients to be served		Type of clients to be served	
		People	
		Households	
		Housing Units	
		Public Facilities	
PUBLIC SERVICES PROJECTS ONLY			
Help Prevent Homelessness?		_____ Yes _____ No	
Help the Homeless?		_____ Yes _____ No	
Help those with HIV/AIDS?		_____ Yes _____ No	
Help Persons with Disabilities?		_____ Yes _____ No	
PUBLIC FACILITIES & IMPROVEMENTS PROJECTS ONLY			
Will the project meet ADA standards for access?		_____ Yes _____ No	
SENIOR CENTER PROJECT DEMOGRAPHICS			
Estimated Number of Current Members			
White alone		Asian Alone	
Black or African American alone		Some other race alone	
American Indian and Alaska Native alone		Two or more races	
Native Hawaiian & Other Pacific Islander alone			

CDBG APPLICATION - PART 4 CONTINUED

Project # _____ Allocation: \$ _____

This is a new project	Yes _____ No _____
This is an ongoing project	Yes _____ No _____
This is an expanded project from previous years	Yes _____ No _____

G - PROJECT ADMINISTRATION

Community will manage project	Yes _____ No _____
Community will hire a vendor to manage project	Yes _____ No _____
County will administer contract	Yes _____ No _____

Other Federal Funds	\$ _____	State/Local Funds	\$ _____	Other	\$ _____
---------------------	----------	-------------------	----------	-------	----------

Please ✓ each box as it applies and attach all required documents

✓	Exempt Project		
	Project is Exempt per 24 CFR 58.34		
	Exempt Form Attached		Project Location Map Attached

OR

✓	Categorically Excluded Project		
	Project is Categorically Excluded		
	Statutory Checklist Attached		Project Location Map Attached
	Project is in Flood Plain		8 Step Attached
	Flood Plain Map https://msc.fema.gov/portal/home		

OR

✓	Environmentally Assessed Project		
	Project is Environmentally Assessed		
	Environmental Assessment Attached		Project Location Map Attached
	Project is in Flood Plain		8 Step Attached
	Flood Plain Map https://msc.fema.gov/portal/home		

✓	Other Projects		
	Historic Preservation Profile (HPP) Attached		Demolition Checklist Attached

Public Hearing Notice - Village of Lake Orion PY 2024 Community Development Block Grant (CDBG) Application

News Release Date

11-14-2023

NOTICE IS HEREBY GIVEN that the Village of Lake Orion will hold a public hearing on the use of Community Development Block Grant funds. The hearing will be held on Monday, November 27, 2023, at 7:30 PM, at Lake Orion Village Hall Council Chambers, 21 East Church Street, Lake Orion, MI 48362; (248) 693-8391, to hear public comments on the CDBG Program Year 2024 application in the approximate amount of \$8,955.00 to fund eligible projects. **All interested citizens are requested to attend the hearing.** **Comments will also be received in person or in writing at Village Hall or by email to [galeczkas \[at\] lakeorion.org](mailto:galeczkas@lakeorion.org) () until 1:00 PM on Monday, November 27, 2023.** Arrangements to reasonably accommodate special needs, including handicap accessibility or interpreter, will be made upon receiving 72-hour prior notice. Contact Village Clerk Susan Galeczka by phone at (248) 693-8391 or in person at Village Hall, 21 East Church Street, Lake Orion, MI 48362, for special services.

Susan Galeczka

Village Clerk

Published: www.lakeorion.org, November 14, 2023

Posted: Lake Orion Village Hall, 21 East Church Street, Lake Orion, MI 48362; November 14, 2023



MINUTES

REGULAR MEETING OF THE LAKE ORION VILLAGE COUNCIL

Monday, November 27, 2023

7:30 PM

Lake Orion Village Hall Council Chambers

21 East Church Street

LAKE ORION, MI 48362

(248) 693-8391 ext. 102

1. Call to Order

The Monday, November 27, 2023 Regular Meeting of the Lake Orion Village Council was called to order in the Lake Orion Village Hall Council Chambers located in the 21 East Church Street, Lake Orion, MI 48362 by President Jerry Narsh at 7:30 PM followed by the Pledge of Allegiance.

2. Pledge of Allegiance

3. Roll Call and Determination of Quorum

Attendee Name	Organization	Title	Status	Arrived
Jerry Narsh	Village of Lake Orion	President	Present	
Teresa L Rutt	Village of Lake Orion	President Pro Tem	Present	
Carl Cyrowski	Village of Lake Orion	Council Member	Present	
Stan Ford	Village of Lake Orion	Council Member	Present	
Michael Lamb	Village of Lake Orion	Council Member	Present	
Nancy Moshier	Village of Lake Orion	Council Member	Present	
Kenneth VanPortfliet	Village of Lake Orion	Council Member	Present	

STAFF PRESENT:

- Village Manager Darwin McClary
- Village Treasurer/Finance Director/Recording Secretary Sonja Stout
- DPW Director Wes Sanchez
- Gage Belko, Village Zoning & Planning, McKenna

8. Public Hearings

1. Public Hearing on Village of Lake Orion PY 2024 Community Development Block Grant (CDBG) Application

President Narsh **opened** the Public Hearing at 8:41 PM.
Let the record show no public comments were received.
President Narsh **closed** the Public Hearing at 8:41 PM.

B. Other Items

1. Approval of PY 2024 CDBG Application

RESULT:	ADOPTED [UNANIMOUS]
MOVER:	Michael Lamb, Council Member
SECONDER:	Nancy Moshier, Council Member
AYES:	Narsh, Rutt, Cyrowski, Ford, Lamb, Moshier, VanPortfliet

RESOLVED: To approve the Village of Lake Orion Program Year 2024 Community Development Block Grant application in the approximate amount of \$8,955.00 as follows and to authorize the Village President to sign the Application and submit the documents to Oakland County all necessary documents relating to the grant application:

<u>PROJECT NAME</u>	<u>ALLOCATION AMOUNT</u>
Sidewalks	\$8,955.00

CERTIFICATION

I, Susan C Galeczka, the duly appointed Clerk of the Village of Lake Orion, Oakland County, Michigan do hereby certify that the foregoing is a true copy of an excerpt from the Village of Lake Orion Village Council draft meeting minutes from November 27, 2023 at which time a quorum was present.



Susan C. Galeczka, CMC MiPMC
Village Clerk

Dated this 30th day of November, 2023



LAKE ORION VILLAGE OF

Unique Entity ID FF55CJ8S1VN3	CAGE / NCAGE 7M1K7	Purpose of Registration Federal Assistance Awards Only
Registration Status Active Registration	Expiration Date Aug 30, 2024	
Physical Address 21 E Church ST Lake Orion, Michigan 48362-3212 United States	Mailing Address 21 E Church ST Lake Orion, Michigan 48362-3212 United States	

Business Information

Doing Business as (blank)	Division Name Village Of Lake Orion	Division Number (blank)
Congressional District Michigan 09	State / Country of Incorporation (blank) / (blank)	URL http://www.lakeorion.org

Registration Dates

Activation Date Sep 8, 2023	Submission Date Aug 31, 2023	Initial Registration Date Mar 3, 2016
---------------------------------------	--	---

Entity Dates

Entity Start Date Jul 1, 1859	Fiscal Year End Close Date Jun 30
---	---

Immediate Owner

CAGE (blank)	Legal Business Name (blank)
------------------------	---------------------------------------

Highest Level Owner

CAGE (blank)	Legal Business Name (blank)
------------------------	---------------------------------------

Executive Compensation

In your business or organization's preceding completed fiscal year, did your business or organization (the legal entity to which this specific SAM record, represented by a Unique Entity ID, belongs) receive both of the following: 1. 80 percent or more of your annual gross revenues in U.S. federal contracts, subcontracts, loans, grants, subgrants, and/or cooperative agreements and 2. \$25,000,000 or more in annual gross revenues from U.S. federal contracts, subcontracts, loans, grants, subgrants, and/or cooperative agreements?

No

Does the public have access to information about the compensation of the senior executives in your business or organization (the legal entity to which this specific SAM record, represented by a Unique Entity ID, belongs) through periodic reports filed under section 13(a) or 15(d) of the Securities Exchange Act of 1934 (15 U.S.C. 78m(a), 78o(d)) or section 6104 of the Internal Revenue Code of 1986?

Not Selected

Proceedings Questions

Is your business or organization, as represented by the Unique Entity ID on this entity registration, responding to a Federal procurement opportunity that contains the provision at FAR 52.209-7, subject to the clause in FAR 52.209-9 in a current Federal contract, or applying for a Federal grant opportunity which contains the award term and condition described in 2 C.F.R. 200 Appendix XII?

No

Does your business or organization, as represented by the Unique Entity ID on this specific SAM record, have current active Federal contracts and/or grants with total value (including any exercised/unexercised options) greater than \$10,000,000?

Not Selected

Within the last five years, had the business or organization (represented by the Unique Entity ID on this specific SAM record) and/or any of its principals, in connection with the award to or performance by the business or organization of a Federal contract or grant, been the subject of a Federal or State (1) criminal proceeding resulting in a conviction or other acknowledgment of fault; (2) civil proceeding resulting in a finding of fault with a monetary fine, penalty, reimbursement, restitution, and/or damages greater than \$5,000, or other acknowledgment of fault; and/or (3) administrative proceeding resulting in a finding of fault with either a monetary fine or penalty greater than \$5,000 or reimbursement, restitution, or damages greater than \$100,000, or other acknowledgment of fault?

Not Selected

Exclusion Summary

Nov 30, 2023 02:38:44 PM GMT
<https://sam.gov/entity/FF55CJ8S1VN3/coreData?status=null>

Active Exclusions Records?

No

SAM Search Authorization

I authorize my entity's non-sensitive information to be displayed in SAM public search results:

Yes

Entity Types

Business Types

Entity Structure

U.S. Government Entity

Entity Type

US Local Government

Organization Factors

(blank)

Profit Structure

(blank)

Socio-Economic Types

Check the registrant's Reps & Certs, if present, under FAR 52.212-3 or FAR 52.219-1 to determine if the entity is an SBA-certified HUBZone small business concern. Additional small business information may be found in the SBA's Dynamic Small Business Search if the entity completed the SBA supplemental pages during registration.

Government Types

U.S. Local Government

Municipality

Financial Information

Accepts Credit Card Payments

Yes

Debt Subject To Offset

No

EFT Indicator

0000

CAGE Code

7M1K7

Electronic Funds Transfer

Account Type

Checking

Routing Number

*****33

Lock Box Number

(blank)

Financial Institution

OXFORD BANK

Account Number

*****11

Automated Clearing House

Phone (U.S.)

2486938391

Email

(blank)

Phone (non-U.S.)

(blank)

Fax

(blank)

Remittance Address

Oxford Bank

1115 S Lapeer RD

Lake Orion, Michigan 48361

United States

Taxpayer Information

EIN

*****7183

Type of Tax

Applicable Federal Tax

Taxpayer Name

VILLAGE OF LAKE ORION VILLAGE
CLERK

Tax Year (Most Recent Tax Year)

2023

Name/Title of Individual Executing Consent

Village Manager

TIN Consent Date

Aug 31, 2023

Address

21 E Church ST

Lake Orion, Michigan 48362

Signature

Darwin Mcclary

Points of Contact

Accounts Receivable POC

**Sonja Stout, Director of Finance/Treasurer****stouts@lakeorion.org****2486938391****Electronic Business****Sonja Stout, Director of Finance****stouts@lakeorion.org****2486938391****21 East Church Street****Lake Orion, Michigan 48362****United States****Government Business****Sonja Stout, Director of Finance****stouts@lakeorion.org****2486938391****21 East Church Street****Lake Orion, Michigan 48362****United States**

Darwin McClary, Village Manager

mcclaryd@lakeorion.org

2486938391

21 East Church Street

Lake Orion, Michigan 48362

United States

Service Classifications**NAICS Codes**

Primary

NAICS Codes

NAICS Title

Size Metrics**IGT Size Metrics**

Annual Revenue (from all IGTs)

(blank)**Worldwide**

Annual Receipts (in accordance with 13 CFR 121)

(blank)

Number of Employees (in accordance with 13 CFR 121)

(blank)**Location**

Annual Receipts (in accordance with 13 CFR 121)

(blank)

Number of Employees (in accordance with 13 CFR 121)

(blank)**Industry-Specific**

Barrels Capacity

(blank)

Megawatt Hours

(blank)

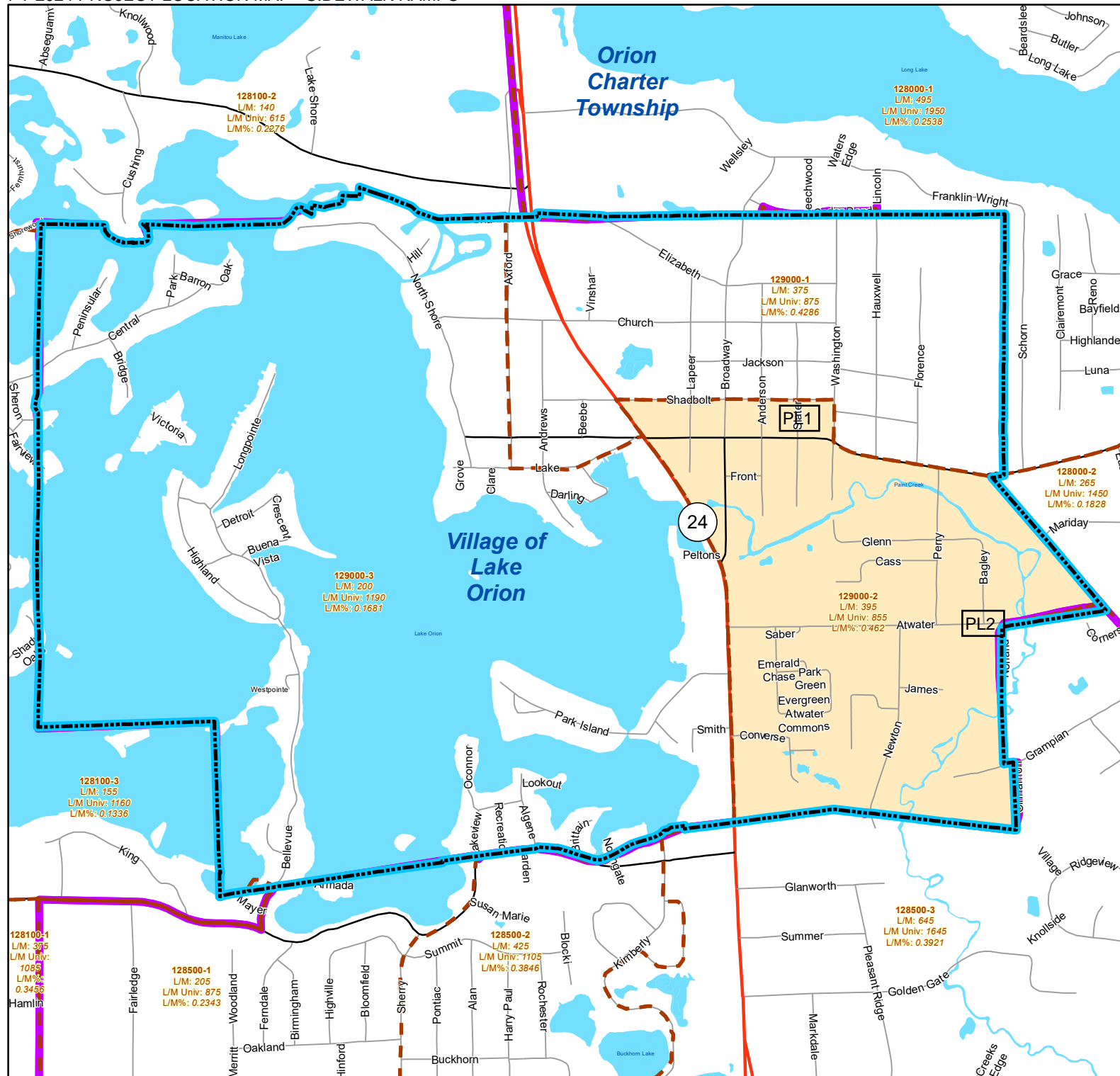
Total Assets

(blank)**Electronic Data Interchange (EDI) Information**

This entity did not enter the EDI information

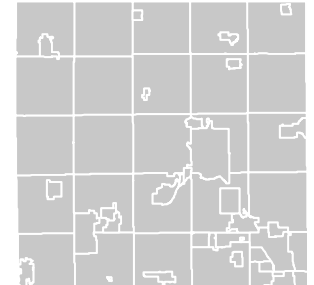
Disaster Response

This entity does not appear in the disaster response registry.



**OAKLAND COUNTY
COMMUNITY & HOME IMPROVEMENT**

Oakland Pointe
250 Elizabeth Lake Road, Ste. 1900
Pontiac, MI 48341-0414
248.858.0493
www.oakgov.com/chi



Area-Wide Benefit Map
Village of Lake Orion

- County Border
- Community Boundary (Highlighted)
- Community Boundary (Adjacent)
- Census Tract 2010
- Eligible Area-Wide Benefit Block Groups
- Non-Eligible Block Groups
- Interstate
- US
- State
- Major
- Minor
- Railroad
- Waterbodies



1 in = 0.2 miles

This Census Block Group map reflects the 2011-2015 American Community Survey (ACS).



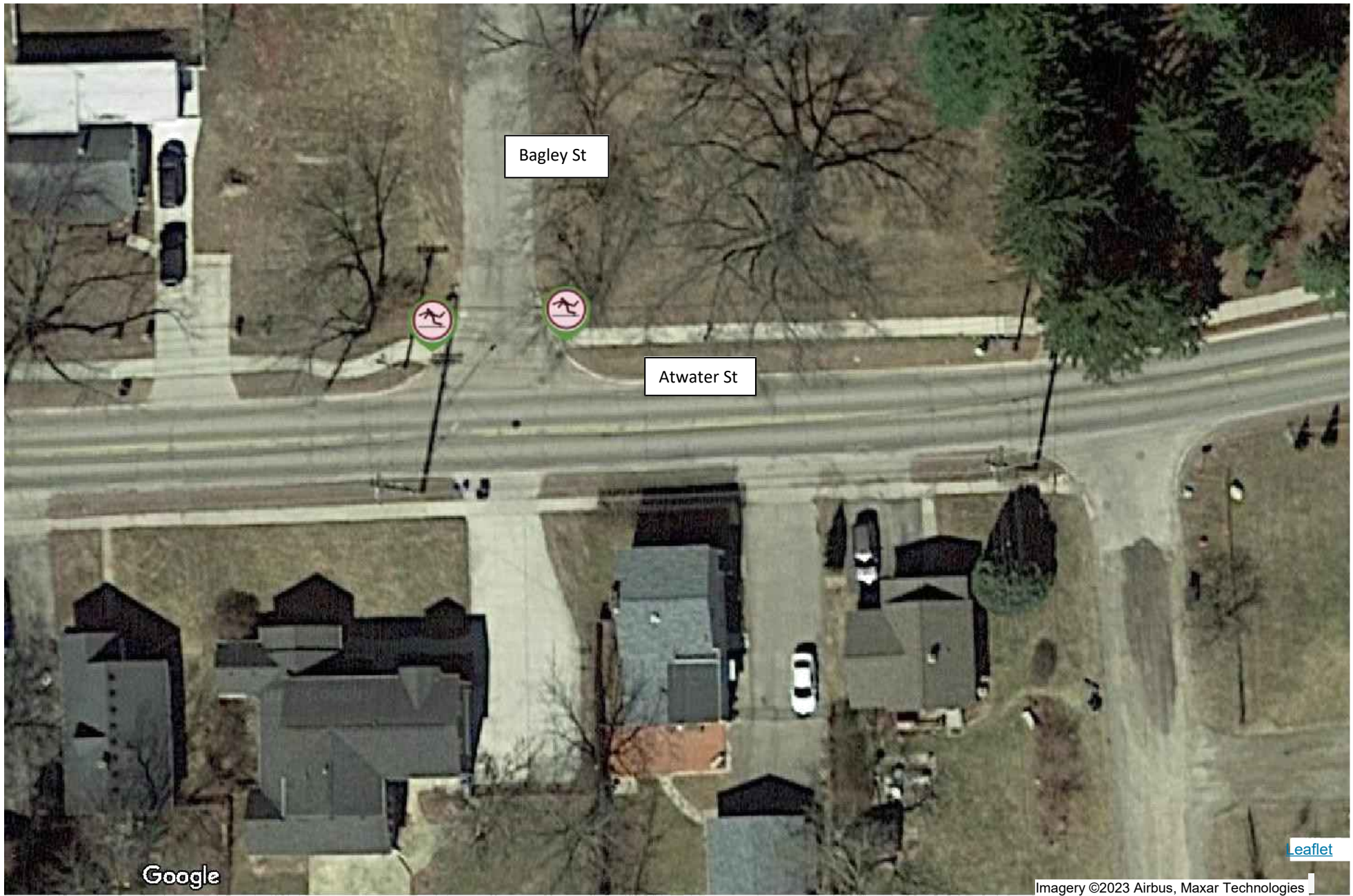
Slater St

Shadbolt St

Google

Leaflet

Imagery ©2023 Airbus, Maxar Technologies



The following **Statutory Checklist**
is required for **Categorically Excluded Projects**

For assistance contact
Environmental Review
at **(248) 858-5309**



U.S. Department of Housing and Urban Development

451 Seventh Street, SW
Washington, DC 20410
www.hud.gov

espanol.hud.gov

Environmental Review for Activity/Project that is Categorically Excluded Subject to Section 58.5

Pursuant to 24 CFR 58.35(a)

Project Information

Project Name: VILLAGE OF LAKE ORION PY 2024 CDBG SIDEWALKS

Responsible Entity: VILLAGE OF LAKE ORION

Grant Recipient (if different than Responsible Entity):

State/Local Identifier: SAM UEI: FF55CJ8S1VN3

Preparer: DARWIN D. P. McCLARY

Certifying Officer Name and Title: DARWIN D. P. McCLARY, VILLAGE MANAGER

Grant Recipient (if different than Responsible Entity):

Consultant (if applicable):

Direct Comments to: DARWIN D. P. McCLARY

Project Location: CENSUS TRACT #129000; BLOCK GROUP #2

Description of the Proposed Project [24 CFR 50.12 & 58.32; 40 CFR 1508.25]:

PROJECT INVOLVES THE REMOVAL, REPLACEMENT, INSTALLATION, CONSTRUCTION, OR RECONSTRUCTION OF SIX (6) HANDICAP-ACCESSIBLE CURB CUT RAMPS AT TWO STREET INTERSECTIONS WHERE SIDEWALK CURRENTLY EXISTS WITHIN THE VILLAGE'S CDBG-ELIGIBLE AREA.

It is estimated that this activity will take up to five years to complete.

Level of Environmental Review Determination:

Categorically Excluded per 24 CFR 58.35(a), and subject to laws and authorities at §58.5: PROJECT DOES NOT REQUIRE ANY MITIGATION FOR COMPLIANCE WITH ANY LISTED STATUTES OR AUTHORITIES, NOR DOES IT REQUIRE ANY FORMAL PERMIT OR LICENSE.

Funding Information

Grant Number	HUD Program	Funding Amount
	CDBG	\$ 8,955.00

Estimated Total HUD Funded Amount: \$ 8,955.00

Estimated Total Project Cost (HUD and non-HUD funds) [24 CFR 58.32(d)]: \$ 12,000.00

Compliance with 24 CFR 50.4, 58.5, and 58.6 Laws and Authorities

Record below the compliance or conformance determinations for each statute, executive order, or regulation. Provide credible, traceable, and supportive source documentation for each authority. Where applicable, complete the necessary reviews or consultations and obtain or note applicable permits of approvals. Clearly note citations, dates/names/titles of contacts, and page references. Attach additional documentation as appropriate.

Compliance Factors: Statutes, Executive Orders, and Regulations listed at 24 CFR §58.5 and §58.6	Are formal compliance steps or mitigation required?	Compliance determinations
STATUTES, EXECUTIVE ORDERS, AND REGULATIONS LISTED AT 24 CFR 50.4 & 58.6		
Airport Hazards 24 CFR Part 51 Subpart D	Yes No <input type="checkbox"/> <input checked="" type="checkbox"/>	PROJECT IS NOT LOCATED WITHIN ANY AIRPORT CLEAR ZONE OR ACCIDENT POTENTIAL ZONE
Coastal Barrier Resources Coastal Barrier Resources Act, as amended by the Coastal Barrier Improvement Act of 1990 [16 USC 3501]	Yes No <input type="checkbox"/> <input checked="" type="checkbox"/>	PROJECT IS NOT LOCATED WITHIN ANY COASTAL ZONE
Flood Insurance Flood Disaster Protection Act of 1973 and National Flood Insurance Reform Act of 1994 [42 USC 4001-4128 and 42 USC 5154a]	Yes No <input type="checkbox"/> <input checked="" type="checkbox"/>	PROJECT IS NOT LOCATED WITHIN ANY FLOODPLAIN; FIRM MAP IS ATTACHED

STATUTES, EXECUTIVE ORDERS, AND REGULATIONS LISTED AT 24 CFR 50.4 & 58.5

Clean Air Clean Air Act, as amended, particularly section 176(c) & (d); 40 CFR Parts 6, 51, 93	Yes No <input type="checkbox"/> <input checked="" type="checkbox"/>	PROJECT WILL NOT IMPACT AIR QUALITY
Coastal Zone Management Coastal Zone Management Act, sections 307(c) & (d)	Yes No <input type="checkbox"/> <input checked="" type="checkbox"/>	PROJECT IS NOT LOCATED WITHIN ANY COASTAL ZONE
Contamination and Toxic Substances 24 CFR Part 50.3(i) & 58.5(i)(2)	Yes No <input type="checkbox"/> <input checked="" type="checkbox"/>	PROJECT WILL NOT CAUSE EXPOSURE TO ANY HAZARDOUS OR TOXIC CHEMICALS OR MATERIALS
Endangered Species Endangered Species Act of 1973, particularly section 7; 50 CFR Part 402	Yes No <input type="checkbox"/> <input checked="" type="checkbox"/>	PROJECT IS NOT LIKELY TO AFFECT ENDANGERED SPECIES
Explosive and Flammable Hazards 24 CFR Part 51 Subpart C	Yes No <input type="checkbox"/> <input checked="" type="checkbox"/>	PROJECT WILL NOT CAUSE EXPOSURE TO EXPLOSIVE OR FLAMMABLE HAZARDS
Farmlands Protection Farmland Protection Policy Act of 1981, particularly sections 1504(b) and 1541; 7 CFR Part 658	Yes No <input type="checkbox"/> <input checked="" type="checkbox"/>	PROJECT IS NOT LOCATED WITHIN A DESIGNATED FARMLAND AREA; MICHIGAN PA 116 MAP IS ATTACHED
Floodplain Management Executive Order 11988, particularly section 2(a); 24 CFR Part 55	Yes No <input type="checkbox"/> <input checked="" type="checkbox"/>	PROJECT IS NOT LOCATED WITHIN A FLOODPLAIN; FIRM MAP IS ATTACHED
Historic Preservation National Historic Preservation Act of 1966, particularly sections 106 and 110; 36 CFR Part 800	Yes No <input type="checkbox"/> <input checked="" type="checkbox"/>	PROJECT WILL NOT AFFECT HISTORIC SITES OR RESOURCES
Noise Abatement and Control Noise Control Act of 1972, as amended by the Quiet Communities Act of 1978; 24 CFR Part 51 Subpart B	Yes No <input type="checkbox"/> <input checked="" type="checkbox"/>	NO UNUSUAL OR EXCESSIVE NOISE IS EXPECTED IN CONJUNCTION WITH PROJECT ACTIVITIES
Sole Source Aquifers	Yes No	

Safe Drinking Water Act of 1974, as amended, particularly section 1424(e); 40 CFR Part 149	<input type="checkbox"/> Yes <input checked="" type="checkbox"/> No	PROJECT IS NOT LOCATED WITHIN ANY SOLE-SOURCE AQUIFER AREA; EA REGION 5 AQUIFER MAP IS ATTACHED
Wetlands Protection Executive Order 11990, particularly sections 2 and 5	Yes <input type="checkbox"/> No <input checked="" type="checkbox"/>	PROJECT IS NOT LOCATED WITHIN ANY DELINEATED WETLAND AREA; STATE OF MICHIGAN WETLANDS MAP IS ATTACHED
Wild and Scenic Rivers Wild and Scenic Rivers Act of 1968, particularly section 7(b) and (c)	Yes <input type="checkbox"/> No <input checked="" type="checkbox"/>	PROJECT IS NOT LOCATED WITHIN A DESIGNATED WILD AND SCENIC RIVERS AREA; MICHIGAN WILD AND SCENIC RIVERS MAP AND LIST IS ATTACHED
ENVIRONMENTAL JUSTICE		
Environmental Justice Executive Order 12898	Yes <input type="checkbox"/> No <input checked="" type="checkbox"/>	PROJECT IS NOT LIKELY TO RAISE ENVIRONMENTAL JUSTICE CONCERNS OR ISSUES

Field Inspection (Date and completed by): 11/15/2023 DARWIN D. P. McCLARY

Summary of Findings and Conclusions:

PROJECT DOES NOT REQUIRE ANY MITIGATION FOR COMPLIANCE WITH ANY LISTED STATUTES OR AUTHORITIES, NOR REQUIRES ANY FORMAL PERMIT OR LICENSE.

Mitigation Measures and Conditions [40 CFR 1505.2(c)]

Summarize below all mitigation measures adopted by the Responsible Entity to reduce, avoid, or eliminate adverse environmental impacts and to avoid non-compliance or non-conformance with the above-listed authorities and factors. These measures/conditions must be incorporated into project contracts, development agreements, and other relevant documents. The staff responsible for implementing and monitoring mitigation measures should be clearly identified in the mitigation plan.


Law, Authority, or Factor	Mitigation Measure

Determination:

- ☒ This categorically excluded activity/project converts to Exempt, per 58.34(a)(12) because there are no circumstances which require compliance with any of the federal laws and authorities cited at

§58.5. Funds may be committed and drawn down after certification of this part for this (now) EXEMPT project; OR

- ☐ This categorically excluded activity/project cannot convert to Exempt because there are circumstances which require compliance with one or more federal laws and authorities cited at §58.5. Complete consultation/mitigation protocol requirements, **publish NOI/RROF and obtain “Authority to Use Grant Funds”** (HUD 7015.16) per Section 58.70 and 58.71 before committing or drawing down any funds; OR
- ☐ This project is now subject to a full Environmental Assessment according to Part 58 Subpart E due to extraordinary circumstances (Section 58.35(c)).

Preparer Signature:  Date: NOVEMBER 30, 2023

Name/Title/Organization: DARWIN D. P. McCLARY / VILLAGE MANAGER / VILLAGE OF LAKE ORION

Responsible Entity Agency Official Signature:

Date: NOVEMBER 30, 2023

Name/Title: JERRY NARSH / VILLAGE PRESIDENT

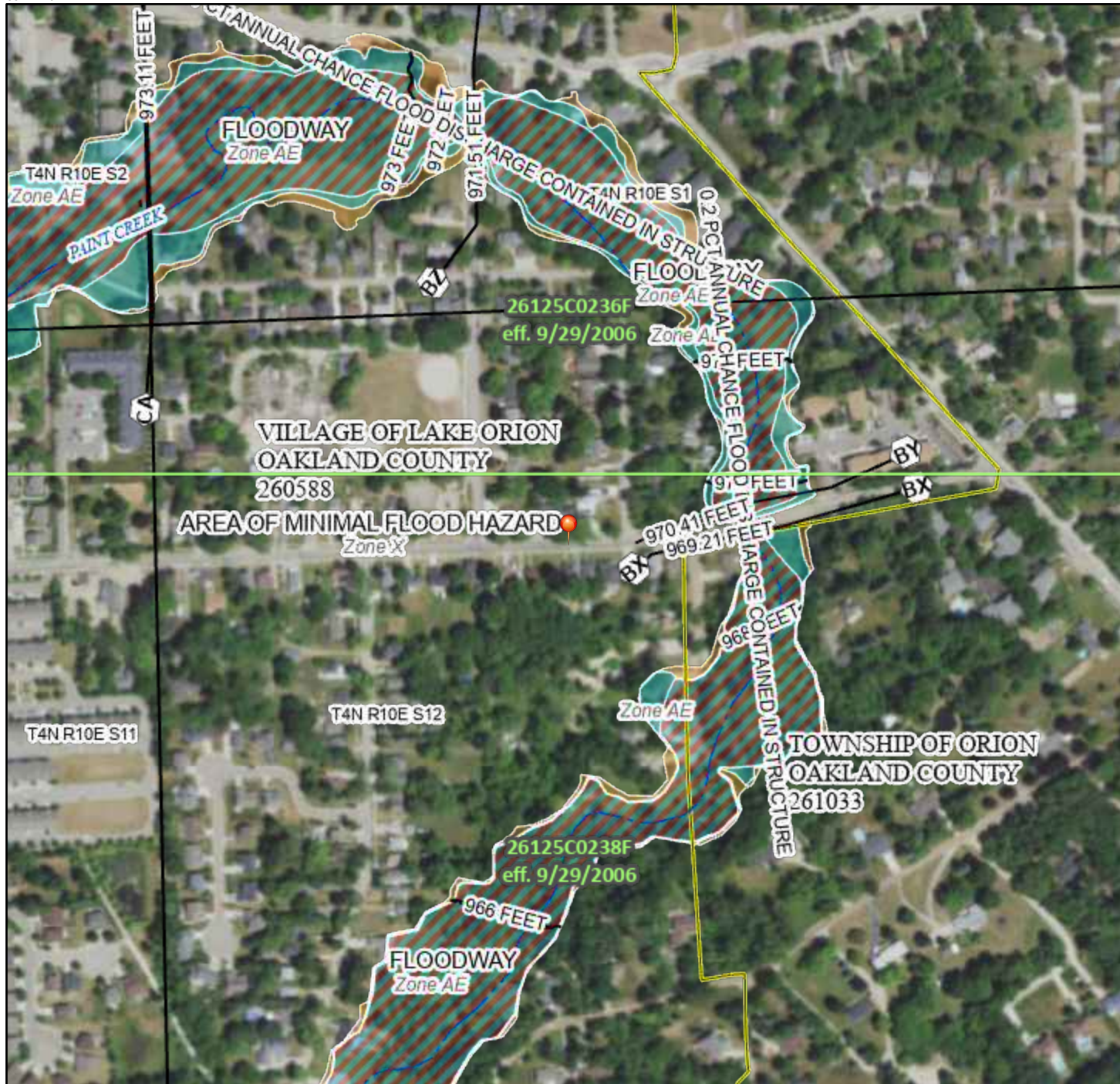
This original, signed document and related supporting material must be retained on file by the Responsible Entity in an Environmental Review Record (ERR) for the activity/project (ref: 24 CFR Part 58.38) and in accordance with recordkeeping requirements for the HUD program(s).

8/25/2023

National Flood Hazard Layer FIRMMette



83°14'16"W 42°47'4"N



0 250 500 1,000 1,500 2,000 Feet

1:6,000

83°13'39"W 42°46'38"N

Basemap Imagery Source: USGS National Map 2023

Legend

SEE FIS REPORT FOR DETAILED LEGEND AND INDEX MAP FOR FIRM PANEL LAYOUT

SPECIAL FLOOD HAZARD AREAS		Without Base Flood Elevation (BFE) Zone A, V, A99
		With BFE or Depth Zone AE, AO, AH, VE, AR
		Regulatory Floodway
OTHER AREAS OF FLOOD HAZARD		0.2% Annual Chance Flood Hazard, Areas of 1% annual chance flood with average depth less than one foot or with drainage areas of less than one square mile Zone X
		Future Conditions 1% Annual Chance Flood Hazard Zone X
		Area with Reduced Flood Risk due to Levee. See Notes. Zone X
		Area with Flood Risk due to Levee Zone D
OTHER AREAS		NO SCREEN Area of Minimal Flood Hazard Zone X
		Effective LOMRs
GENERAL STRUCTURES		Area of Undetermined Flood Hazard Zone D
		Channel, Culvert, or Storm Sewer
		Levee, Dike, or Floodwall
OTHER FEATURES		20.2 Cross Sections with 1% Annual Chance Water Surface Elevation
		17.5 Cross Sections with 1% Annual Chance Water Surface Elevation
		Coastal Transect
		Base Flood Elevation Line (BFE)
		Limit of Study
		Jurisdiction Boundary
MAP PANELS		Coastal Transect Baseline
		Profile Baseline
		Hydrographic Feature
		Digital Data Available
		No Digital Data Available
		Unmapped



The pin displayed on the map is an approximate point selected by the user and does not represent an authoritative property location.

This map complies with FEMA's standards for the use of digital flood maps if it is not void as described below. The basemap shown complies with FEMA's basemap accuracy standards

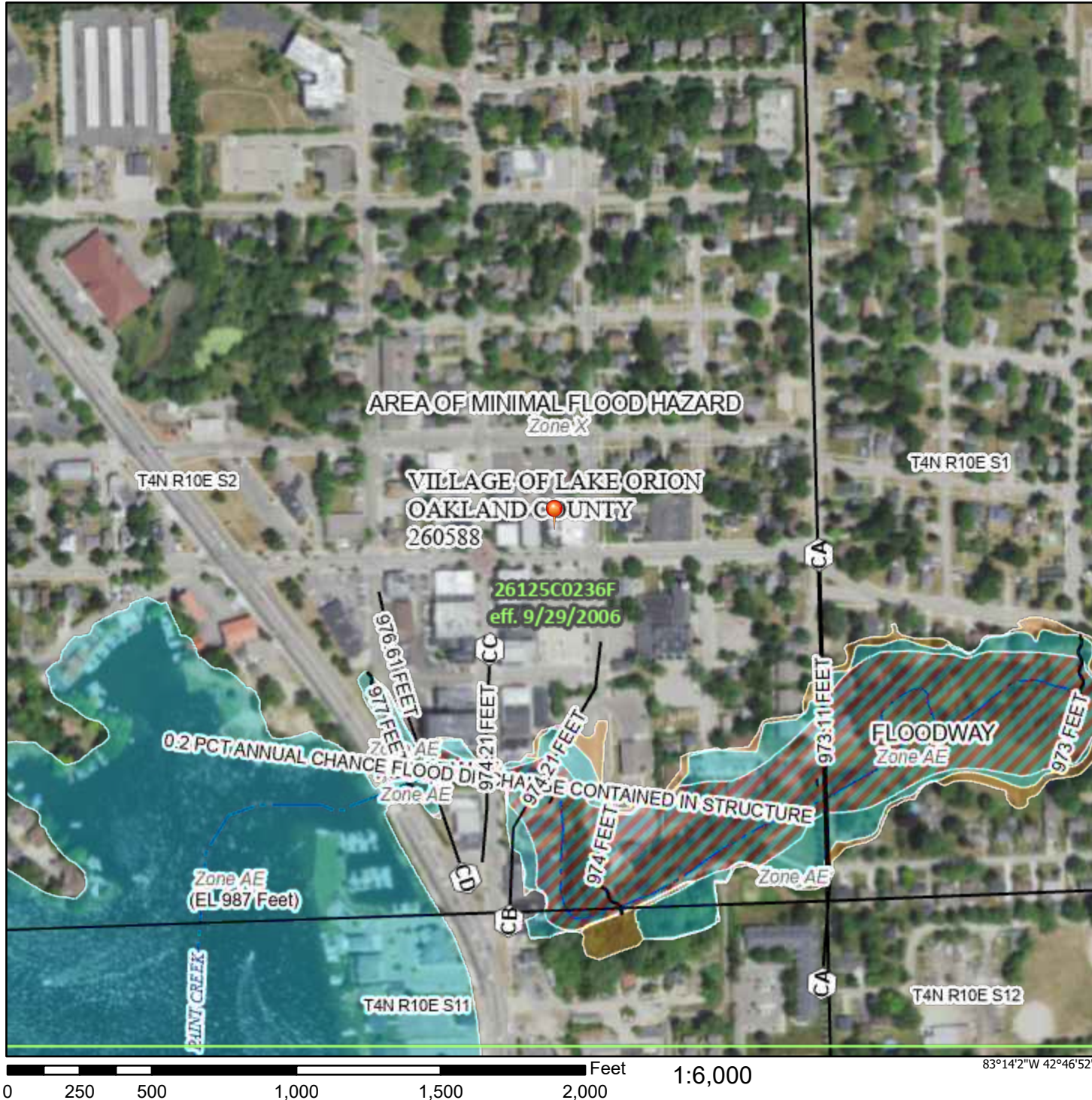
The flood hazard information is derived directly from the authoritative NFHL web services provided by FEMA. This map was exported on **11/30/2023 at 2:28 PM** and does not reflect changes or amendments subsequent to this date and time. The NFHL and effective information may change or become superseded by new data over time.

This map image is void if the one or more of the following map elements do not appear: basemap imagery, flood zone labels, legend, scale bar, map creation date, community identifiers, FIRM panel number, and FIRM effective date. Map images for unmapped and unmodernized areas cannot be used for regulatory purposes.

National Flood Hazard Layer FIRMette



83°14'39"W 42°47'19"N



Legend

SEE FIS REPORT FOR DETAILED LEGEND AND INDEX MAP FOR FIRM PANEL LAYOUT

SPECIAL FLOOD HAZARD AREAS		Without Base Flood Elevation (BFE) Zone A, V, A99
		With BFE or Depth Zone AE, AO, AH, VE, AR
OTHER AREAS OF FLOOD HAZARD		0.2% Annual Chance Flood Hazard, Areas of 1% annual chance flood with average depth less than one foot or with drainage areas of less than one square mile Zone X
		Future Conditions 1% Annual Chance Flood Hazard Zone X
		Area with Reduced Flood Risk due to Levee. See Notes. Zone X
		Area with Flood Risk due to Levee Zone D
OTHER AREAS		NO SCREEN Area of Minimal Flood Hazard Zone X
		Effective LOMRs
GENERAL STRUCTURES		Area of Undetermined Flood Hazard Zone D
		Channel, Culvert, or Storm Sewer
OTHER FEATURES		Levee, Dike, or Floodwall
		Cross Sections with 1% Annual Chance Water Surface Elevation
MAP PANELS		Coastal Transect
		Base Flood Elevation Line (BFE)
OTHER FEATURES		Limit of Study
		Jurisdiction Boundary
OTHER FEATURES		Coastal Transect Baseline
		Profile Baseline
OTHER FEATURES		Hydrographic Feature
		Digital Data Available
MAP PANELS		No Digital Data Available
		Unmapped



The pin displayed on the map is an approximate point selected by the user and does not represent an authoritative property location.

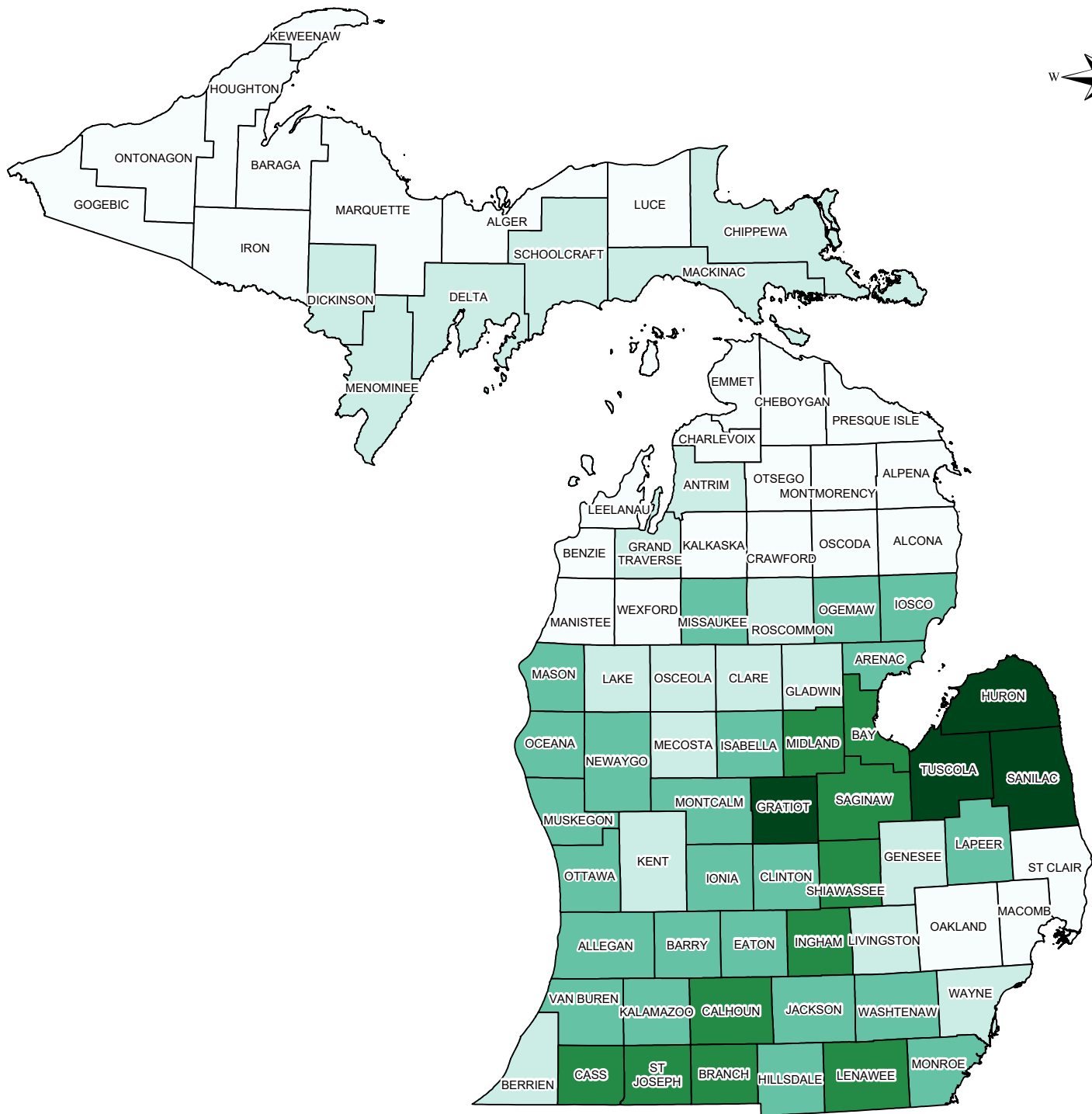
This map complies with FEMA's standards for the use of digital flood maps if it is not void as described below. The basemap shown complies with FEMA's basemap accuracy standards

The flood hazard information is derived directly from the authoritative NFHL web services provided by FEMA. This map was exported on **11/30/2023 at 2:26 PM** and does not reflect changes or amendments subsequent to this date and time. The NFHL and effective information may change or become superseded by new data over time.

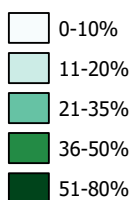
This map image is void if the one or more of the following map elements do not appear: basemap imagery, flood zone labels, legend, scale bar, map creation date, community identifiers, FIRM panel number, and FIRM effective date. Map images for unmapped and unmodernized areas cannot be used for regulatory purposes.

Basemap Imagery Source: USGS National Map 2023

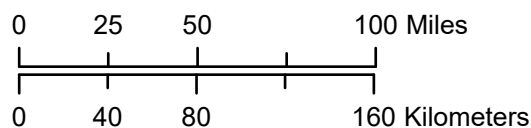
MDARD Farmland Preservation Program (PA116) Percentage of Farmland Enrolled by County



Percentage of Farmland Enrolled in PA116



MDARD PA116 acres enrolled
as of August 29, 2019



[Click here to view USDA's 2017 Census of Agriculture - County Data](#)



Michigan Department of
Agriculture and Rural
Development

Map Created: 10/10/2019



Region 5 Water

You are here: [EPA Home](#) [About Region 5](#) [Water](#) Sole Source Aquifers

Designated Sole Source Aquifers in Region 5

Contact Information

Table of Contents:

[Region 5 Designated Sole Source Aquifers](#)
[Designated Sole Source Aquifers Region 5 map \(PDF\)](#)
(1pg, 556 K)
[Areas of Concern - Project Overview](#)
[Questions and Answers about Sole Source Aquifers](#)

EPA Region 5 Sole Source Aquifer Coordinator

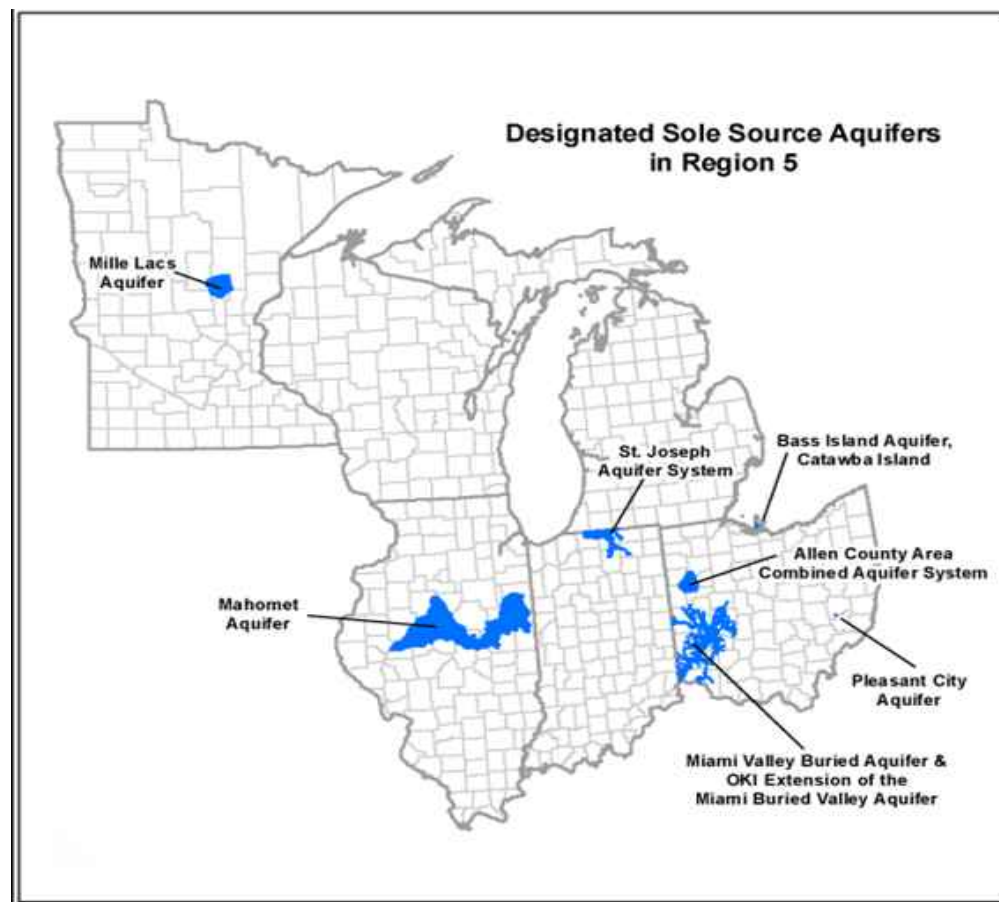
William Spaulding
(spaulding.william@epa.gov)
77 W. Jackson Blvd. (WG-15J)
Chicago, IL 60604

Region 5 Designated Sole Source Aquifers

[Mahomet Sole Source Aquifer Designation](#)
Designation of the [Michindoh Glacial Aquifer Sole Source Aquifer](#) (City of Bryan, Ohio) has been suspended indefinitely (March 2013)

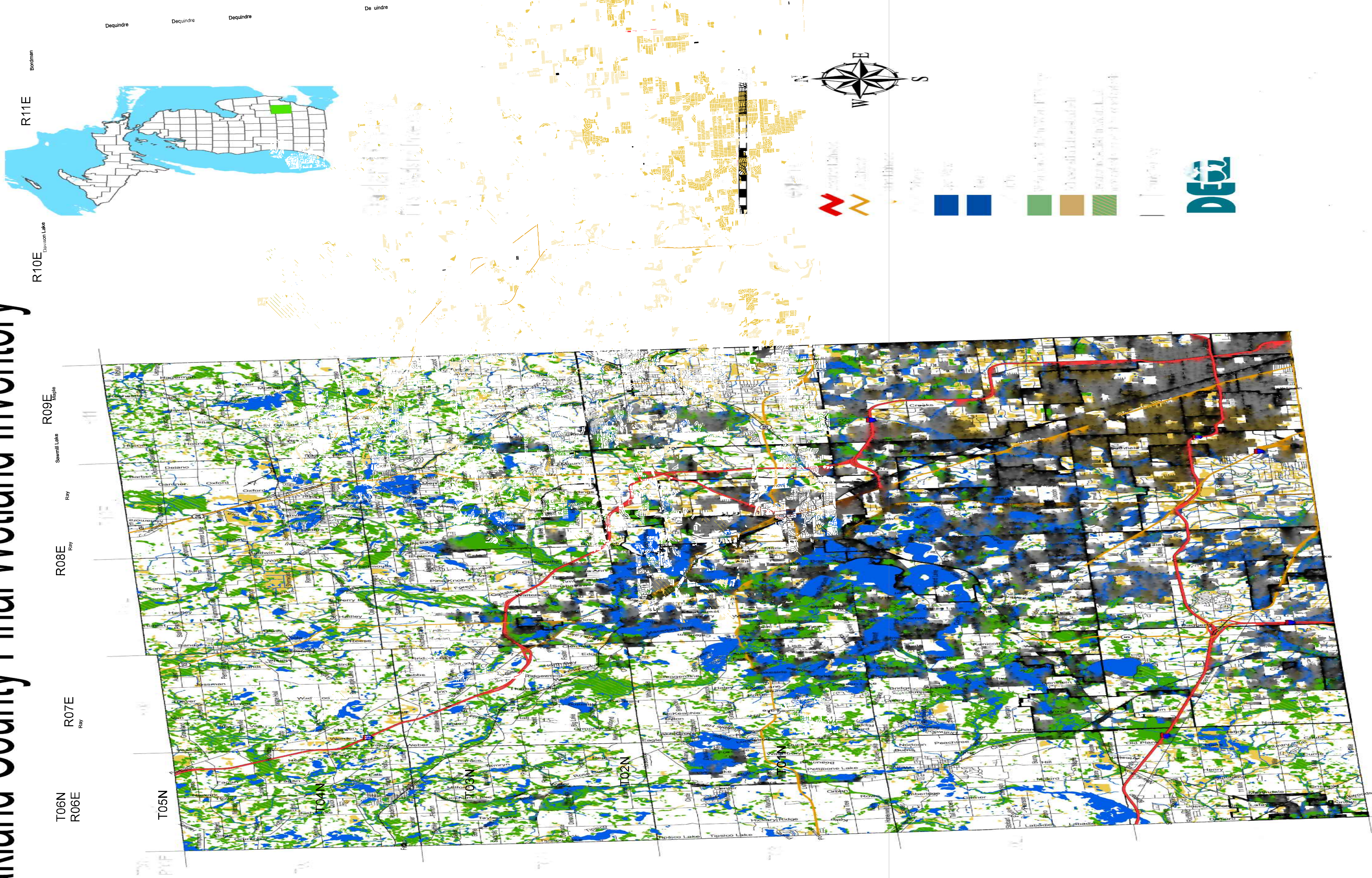
National Information

EPA Sole Source Aquifer Protection Program
Petitioners' Guidance



[Designated Sole Source Aquifers Region 5 map \(PDF\)](#) (1pg, 556 K)

Oakland County Final Wetland Inventory



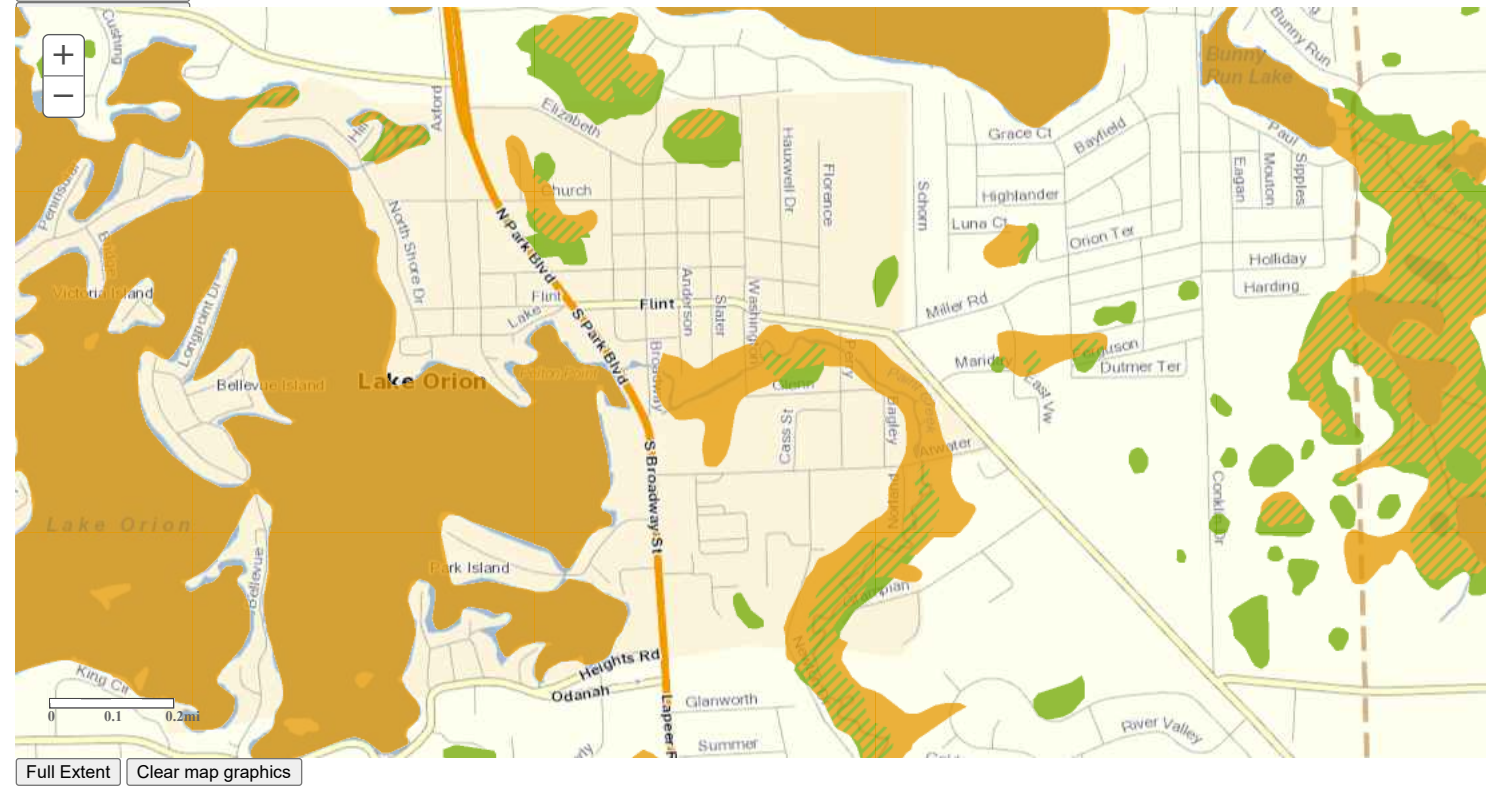
ECOREGIONS

EGLE Conservation Easement

NWI+ DATA

HUC 8 Watershed

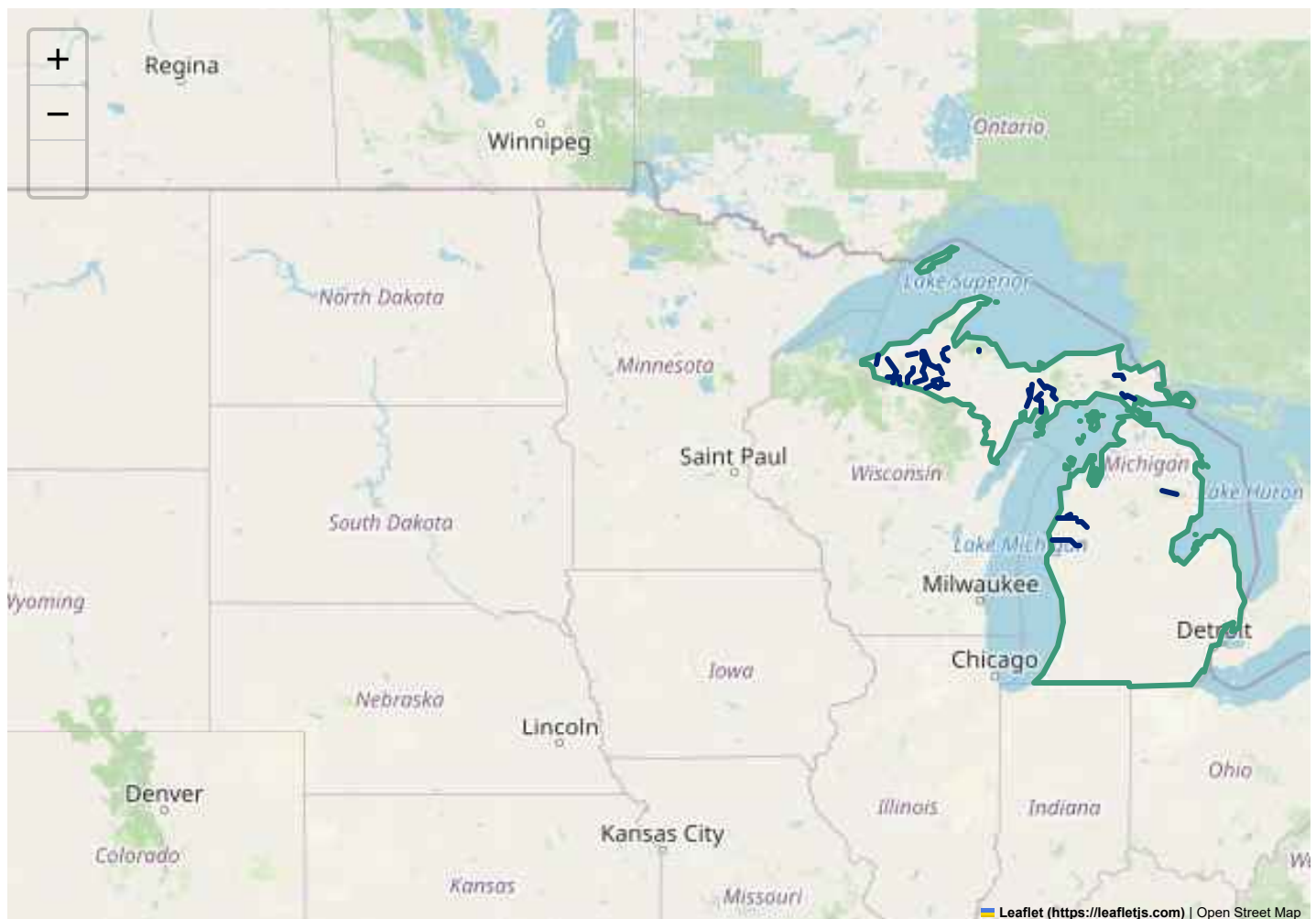
HUC 10 Watershed





Even in the “Great Lakes State,” rivers play a huge role in the lives of every Michigander. From recreation to creation, Michigan’s rivers have carved paths for industries to rise and cities to thrive. The state has over 300 named rivers — several names are shared by different rivers (e.g., there are eight Pine Rivers and seven Black Rivers). In four cases, two rivers of the same name are in one county.

Michigan has approximately 51,438 miles of river, of which 656.4 miles are designated as wild & scenic — just slightly more than 1% of the state's river miles.



Rivers In Michigan



(/river/ausable)

Au Sable River

(/river/ausable)

Michigan (/river/ausable)



(/river/bear)

Bear Creek (/river/bear)

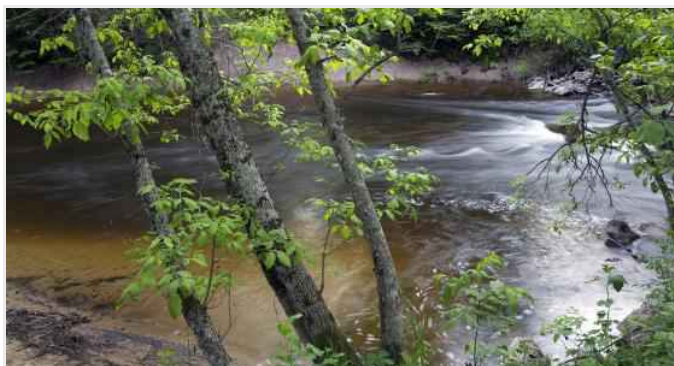
Michigan (/river/bear)



(/river/black-river)

Black River (/river/black-river)

Michigan (/river/black-river)



(/river/carp)

Carp River (/river/carp)

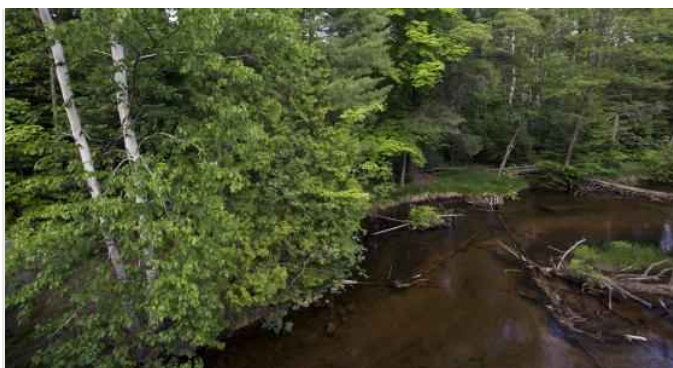
Michigan (/river/carp)



(/river/tahquamenon-east-branch)

East Branch Tahquamenon River (/river/tahquamenon-east-branch)

Michigan (/river/tahquamenon-east-branch)



(/river/indian)

Indian River (/river/indian)

Michigan (/river/indian)



(/river/manistee)

Manistee River (/river/manistee)

Michigan (/river/manistee)



(/river/ontonagon)

Ontonagon River (/river/ontonagon)

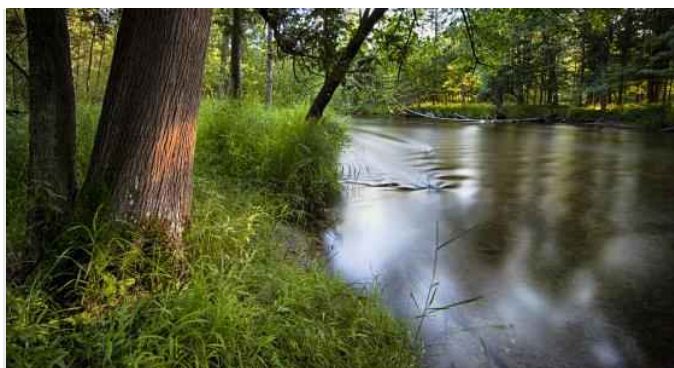
Michigan (/river/ontonagon)



(/river/paint)

Paint River (/river/paint)

Michigan (/river/paint)



(/river/pere-marquette)

Pere Marquette River (/river/pere-marquette)

Michigan (/river/pere-marquette)



(/river/pine)

Pine River (/river/pine)

Michigan (/river/pine)



(/river/presque-isle)

Presque Isle River (/river/presque-isle)

Michigan (/river/presque-isle)



[\(/river/sturgeon-hiawatha\)](#)

Sturgeon River (Hiawatha National Forest)

[\(/river/sturgeon-hiawatha\)](#)Michigan ([/river/sturgeon-hiawatha](#))[\(/river/sturgeon-ottawa\)](#)

Sturgeon River (Ottawa National Forest)

[\(/river/sturgeon-ottawa\)](#)Michigan ([/river/sturgeon-ottawa](#))[\(/river/whitefish\)](#)

Whitefish River

[\(/river/whitefish\)](#)Michigan ([/river/whitefish](#))[\(/river/yellow-dog\)](#)

Yellow Dog River

[\(/river/yellow-dog\)](#)Michigan ([/river/yellow-dog](#))[National Awards \(/national-awards\)](#) | [The Numbers \(/numbers\)](#) |[Nationwide Rivers Inventory \(/nri\)](#) | [Documents \(/documents\)](#)

PARTNERS

Bureau of Land Management (<https://blm.gov/programs/national-conservation-lands/wild-and-scenic-rivers>)

National Park Service (<https://www.nps.gov/orgs/1912/index.htm>)

NPS Partnership Rivers (<https://www.nps.gov/orgs/1912/partnership-wild-and-scenic-rivers.htm>)

U.S. Fish & Wildlife Service (<https://fws.gov>)

U.S. Forest Service (<https://www.fs.usda.gov/managing-land/wild-scenic-rivers>)

River Management Society (<http://river-management.org/>)

REFERENCES

Bibliography (/bibliography)

Interagency Council (/council)

Stewardship (/stewardship)

News (/news)

Videos (/video)

Vulnerability Disclosure Policy (/vulnerability-disclosure-policy)